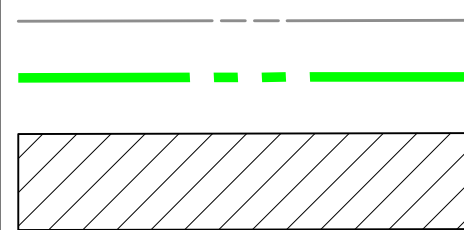
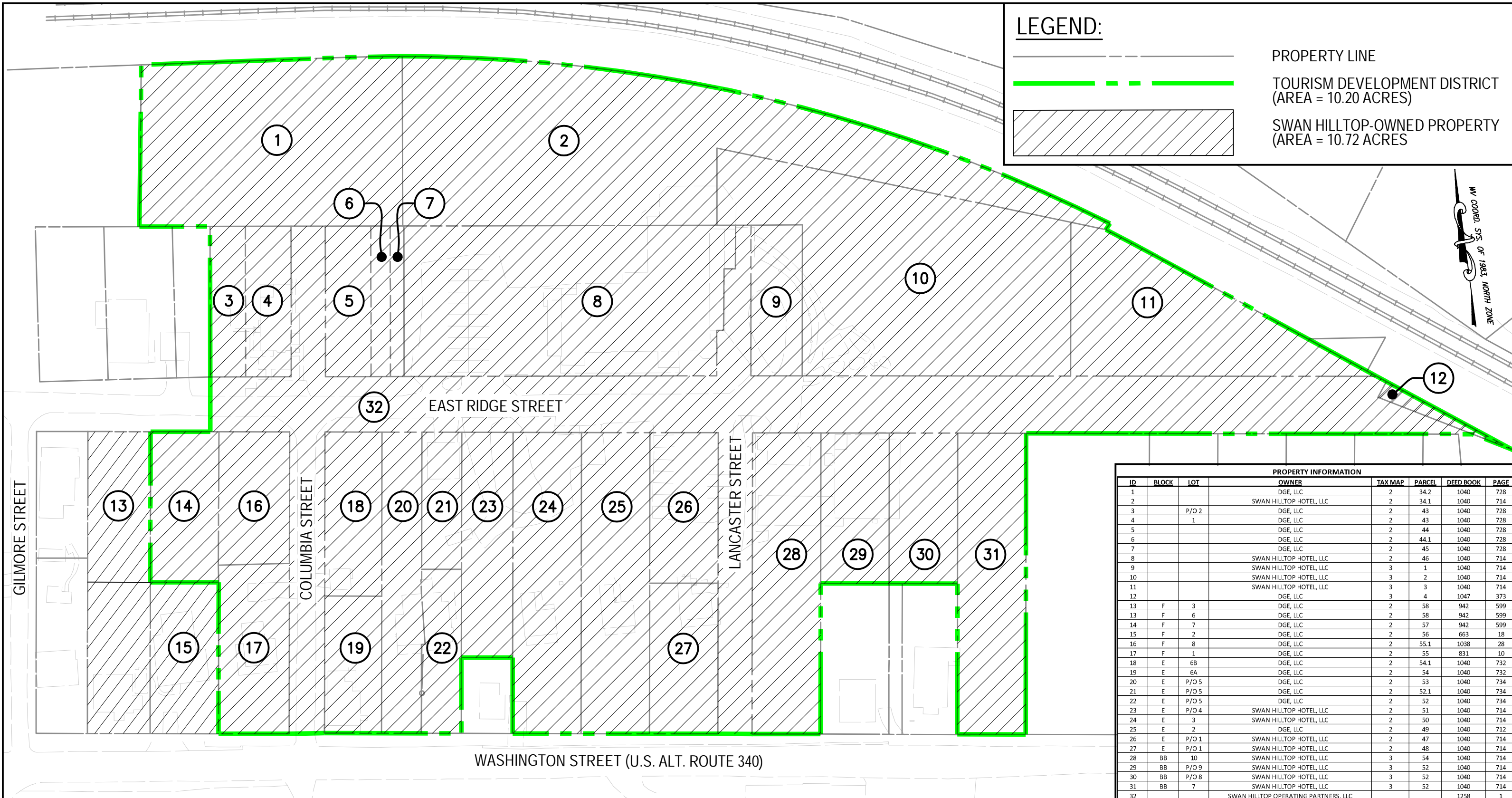


**LEGEND:**



PROPERTY LINE  
 TOURISM DEVELOPMENT DISTRICT  
 (AREA = 10.20 ACRES)  
 SWAN HILLTOP-OWNED PROPERTY  
 (AREA = 10.72 ACRES)

NW CORNER, S/S OF 1983, NORTH ZONE



PROPERTY INFORMATION						
ID	BLOCK	LOT	OWNER	TAX MAP	PARCEL	DEED BOOK PAGE
1			DGE, LLC	2	34.2	1040 728
2			SWAN HILLTOP HOTEL, LLC	2	34.1	1040 714
3		P/O 2	DGE, LLC	2	43	1040 728
4		1	DGE, LLC	2	43	1040 728
5			DGE, LLC	2	44	1040 728
6			DGE, LLC	2	44.1	1040 728
7			DGE, LLC	2	45	1040 728
8			SWAN HILLTOP HOTEL, LLC	2	46	1040 714
9			SWAN HILLTOP HOTEL, LLC	3	1	1040 714
10			SWAN HILLTOP HOTEL, LLC	3	2	1040 714
11			SWAN HILLTOP HOTEL, LLC	3	3	1040 714
12			DGE, LLC	3	4	1047 373
13	F	3	DGE, LLC	2	58	942 599
13	F	6	DGE, LLC	2	58	942 599
14	F	7	DGE, LLC	2	57	942 599
15	F	2	DGE, LLC	2	56	663 18
16	F	8	DGE, LLC	2	55.1	1038 28
17	F	1	DGE, LLC	2	55	831 10
18	E	6B	DGE, LLC	2	54.1	1040 732
19	E	6A	DGE, LLC	2	54	1040 732
20	E	P/O 5	DGE, LLC	2	53	1040 734
21	E	P/O 5	DGE, LLC	2	52.1	1040 734
22	E	P/O 5	DGE, LLC	2	52	1040 734
23	E	P/O 4	SWAN HILLTOP HOTEL, LLC	2	51	1040 714
24	E	3	SWAN HILLTOP HOTEL, LLC	2	50	1040 714
25	E	2	DGE, LLC	2	49	1040 712
26	E	P/O 1	SWAN HILLTOP HOTEL, LLC	2	47	1040 714
27	E	P/O 1	SWAN HILLTOP HOTEL, LLC	2	48	1040 714
28	BB	10	SWAN HILLTOP HOTEL, LLC	3	54	1040 714
29	BB	P/O 9	SWAN HILLTOP HOTEL, LLC	3	52	1040 714
30	BB	P/O 8	SWAN HILLTOP HOTEL, LLC	3	52	1040 714
31	BB	7	SWAN HILLTOP HOTEL, LLC	3	52	1040 714
32			SWAN HILLTOP OPERATING PARTNERS, LLC		1258	1



1112 16th St, Suite 910  
 Washington, DC 20036  
 Phone: 202-869-1600  
 www.gordondc.us.com

CIVIL ENGINEERING  
 ZONING & ENTITLEMENTS  
 FEASIBILITY STUDIES  
 SUSTAINABLE DESIGN

**HILL TOP HOUSE HOTEL**  
 TOURISM DEVELOPMENT DISTRICT  
 SCALE: 1" = 80'  
 April 26, 2021

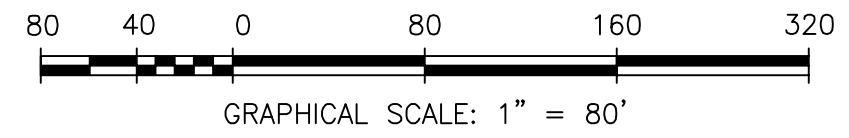


EXHIBIT D109-0201-0016  
 CADD: D109-0201-0016\_TOURISM DEVELOPMENT DISTRICT.DWG  
 DRAWN BY: G. NEWMAN  
 SHEET 1 OF 1