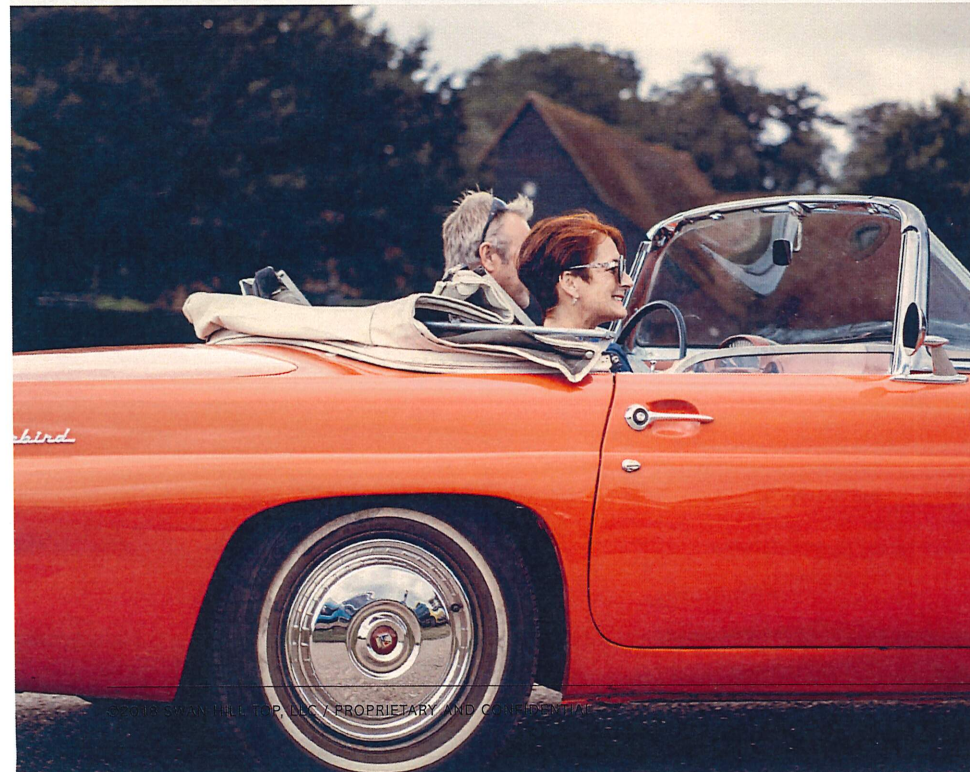
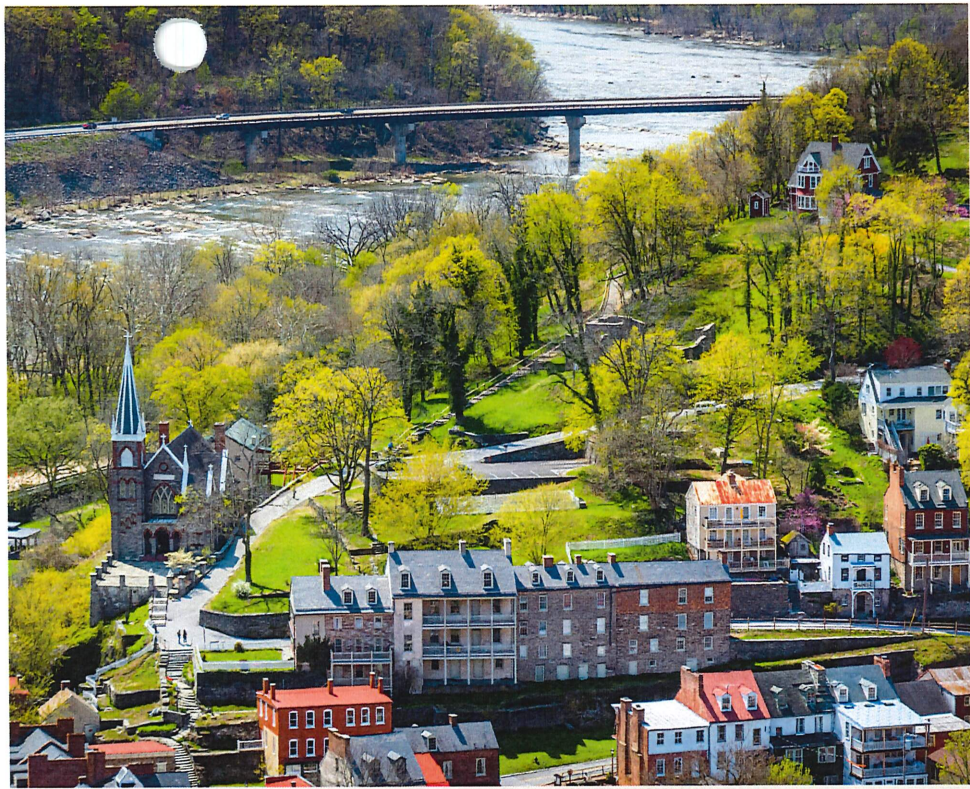


HILL TOP HOUSE HOTEL  
HARPERS FERRY, WV

Concept Plan Submission



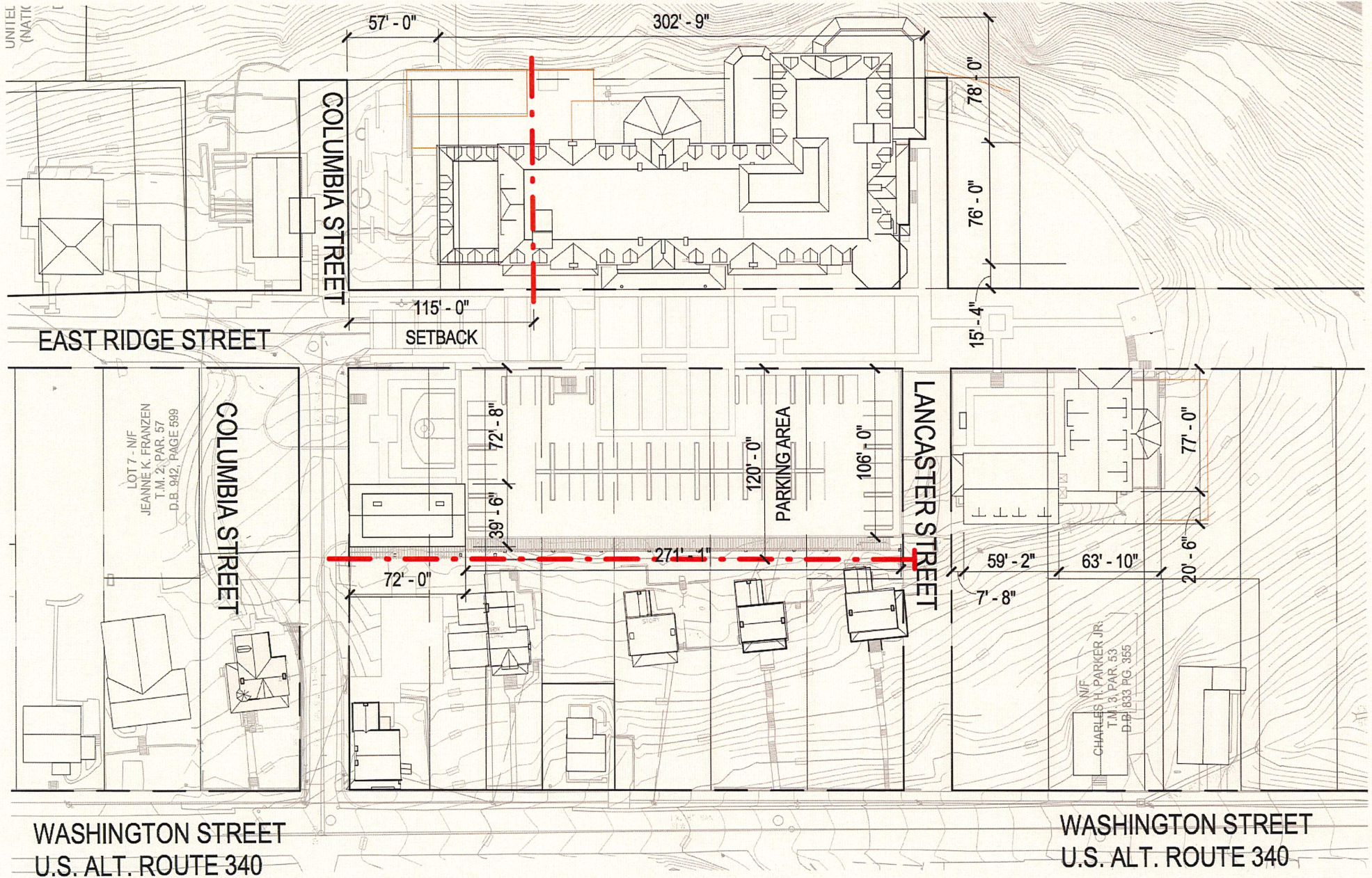
---

## TABLE OF CONTENTS

---

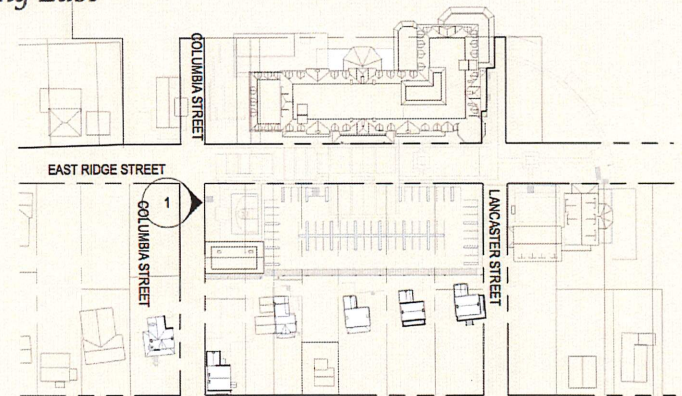
- Concept Site Plan
- Concept Site Elevation
- Links to Online 3D Models
- Open Space Exhibit

# HILL TOP HOUSE HOTEL

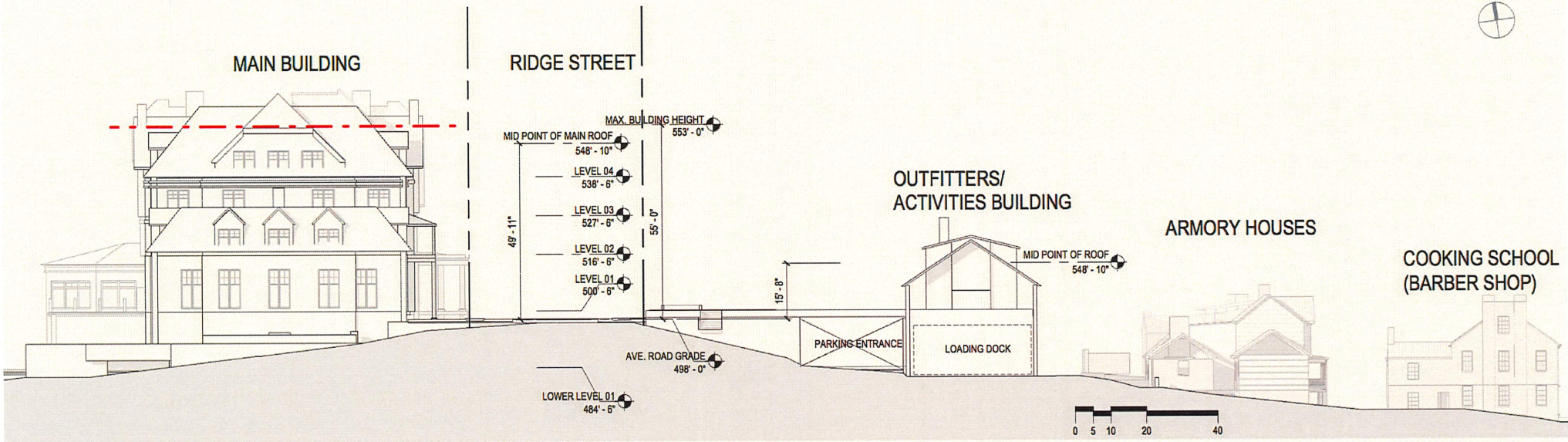


# HILL TOP HOUSE HOTEL

Concept Site Elevation at Columbia Street - Facing East



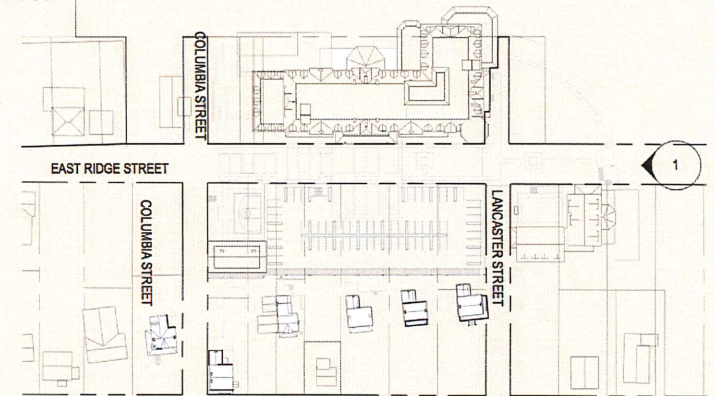
Key Plan



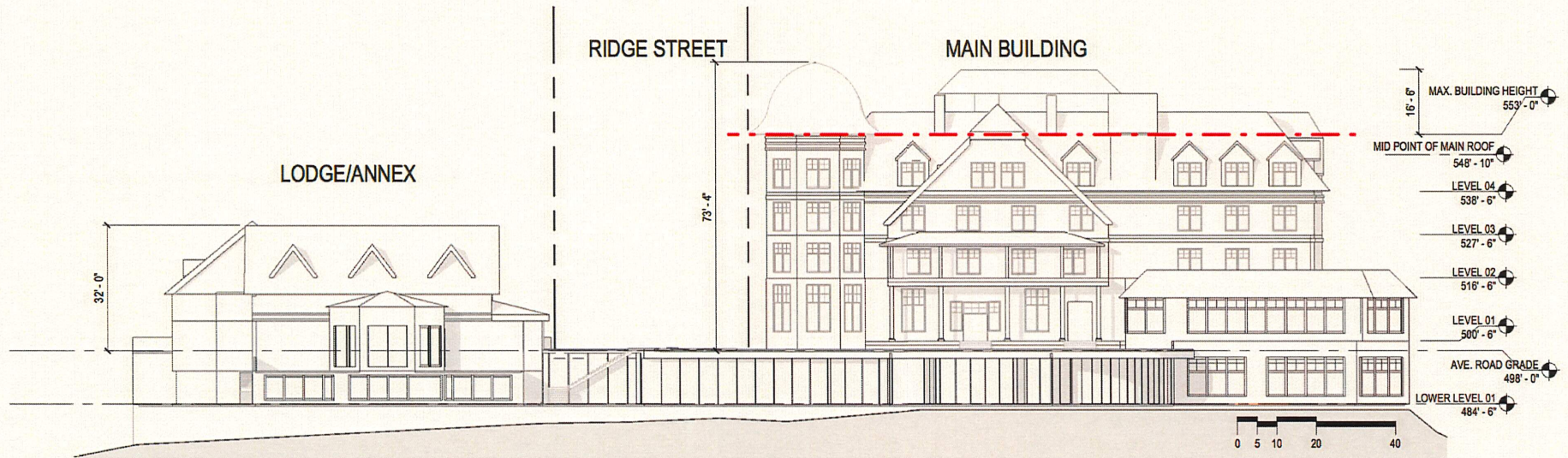
Scale 1" = 40'-0"

# HILL TOP HOUSE HOTEL

Concept Site Elevation at Crescent - Facing West



Key Plan



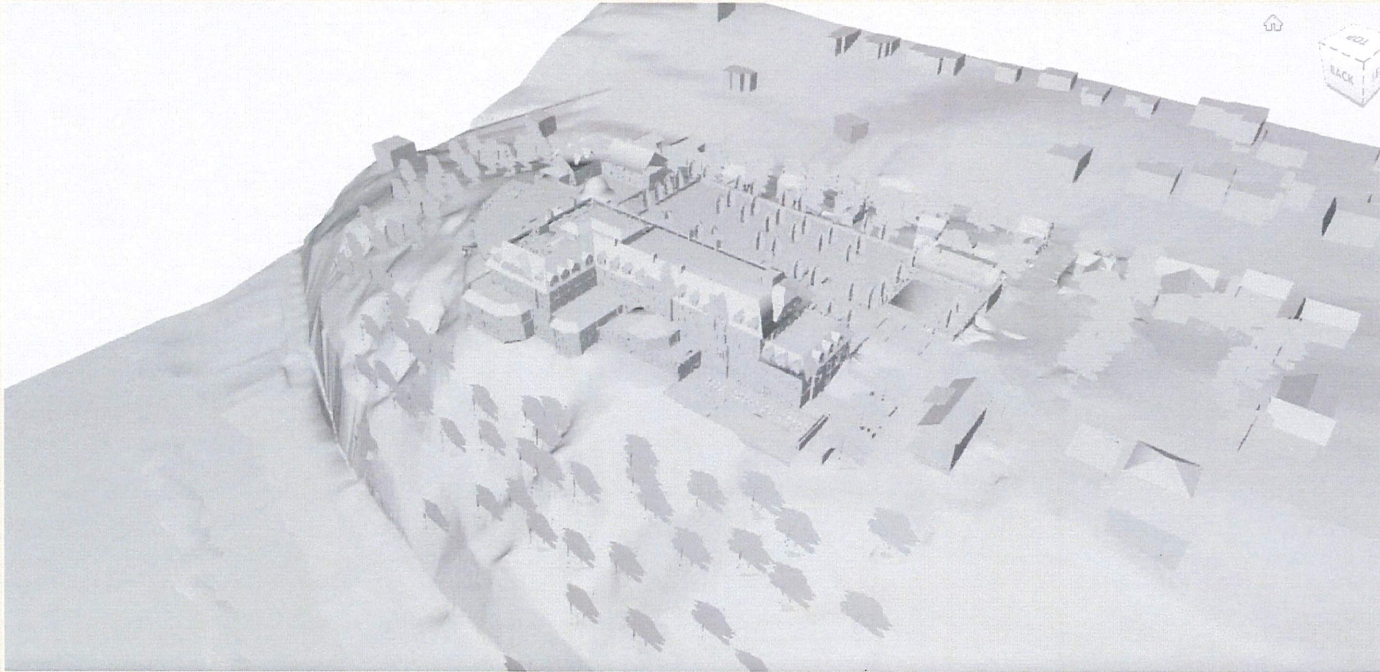
Scale 1" = 40'-0"

---

# HILL TOP HOUSE HOTEL

---

*Links to Digital 3D Model*



*Autodesk Viewer : <https://autode.sk/2LsQbb1>*



360 View 1  
<http://panorama.enscape3d.com/view/n9nuqekh/>



360 View 2  
<http://panorama.enscape3d.com/view/gvpxiwy4/>



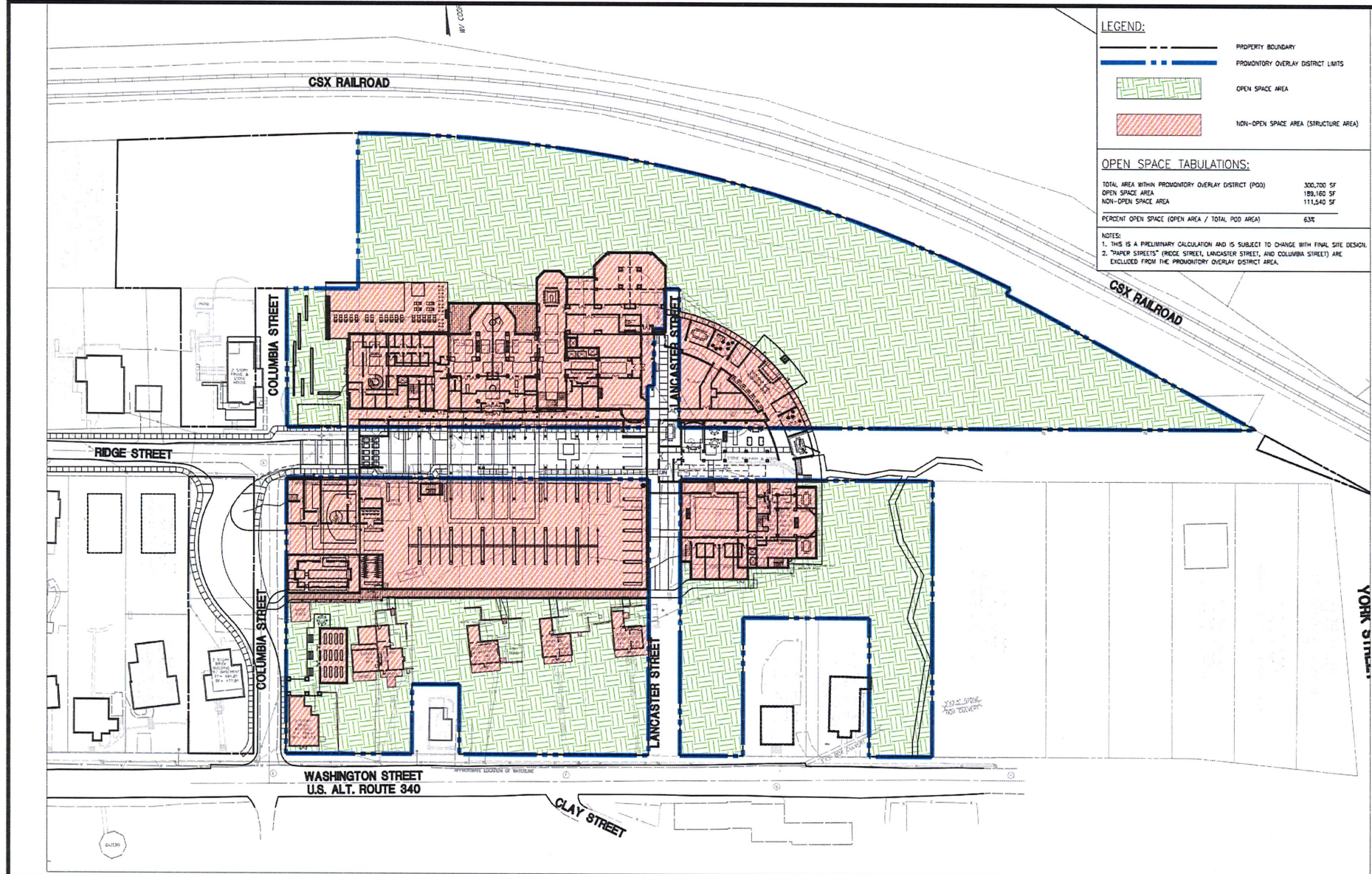
360 View 3  
<http://panorama.enscape3d.com/view/pts0rko/>



360 View 4  
<http://panorama.enscape3d.com/view/cu96somp/>



360 View 5  
<http://panorama.enscape3d.com/view/rqylrxjw/>



**LEGEND:**

- PROPERTY BOUNDARY
- PROMONTORY OVERLAY DISTRICT LIMITS
- OPEN SPACE AREA
- NON-OPEN SPACE AREA (STRUCTURE AREA)

**OPEN SPACE TABULATIONS:**

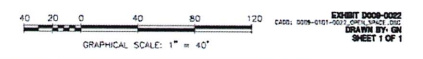
TOTAL AREA WITH PROMONTORY OVERLAY DISTRICT (POD)	300,700 SF
OPEN SPACE AREA	189,160 SF
NON-OPEN SPACE AREA	111,540 SF
PERCENT OPEN SPACE (OPEN AREA / TOTAL POD AREA)	63%

**NOTES:**

- THIS IS A PRELIMINARY CALCULATION AND IS SUBJECT TO CHANGE WITH FINAL SITE DESIGN.
- "PAPER STREETS" (RIDGE STREET, LANCASTER STREET, AND COLUMBIA STREET) ARE EXCLUDED FROM THE PROMONTORY OVERLAY DISTRICT AREA.

**GordonDC**  
 CIVIL ENGINEERING  
 PROGRAMMING AND PLANNING  
 SECURITY CONSULTING  
 1020 16th St. Suite 205  
 Washington, DC 20036  
 Phone: 202-869-1600  
 www.gordondc.com

**HILLTOP HOUSE HOTEL**  
 PROMONTORY OVERLAY DISTRICT - PRELIMINARY OPEN SPACE CALCULATION  
 SCALE: 1"=40'  
 MAY 25, 2018



**EXHIBIT DDD-002**  
 CASE: 0018-0101-0007, 0018-0101-0008  
 DRAWN BY: GK  
 SHEET 1 OF 1

An aerial photograph of a town nestled in a valley during autumn. The trees are in various shades of yellow, orange, and red. A river flows through the town, and a bridge crosses it. In the background, there are mountains and a cloudy sky. The text "THANK YOU" is centered in the middle of the image, flanked by two horizontal lines.

THANK YOU